

Spring 2017

COLLEGE OF EDUCATION

# CONNECTIONS

Career-changers'  
pathway to teaching

Wildcat Nation and  
Osage Nation unite

Art educator colors  
our world



# You + K-State = Your Future

## Want a graduate degree built on a foundation as solid as native Kansas limestone?

**KANSAS STATE**  
UNIVERSITY

College of Education

*The College of Education's online graduate programs are ranked in the top 100 by U.S. News and World Report.*

	Master's	Ed.D.	Ph.D.	Certificate	Endorsement	Online
<b>Department of Curriculum and Instruction</b> – For details, call 785-532-5904 or ktaylor@k-state.edu						
Curriculum and Instruction	🎓	🎓	🎓			
Master of Arts in Teaching (includes KS K-6 licensure)	🎓					🌐
Master of Science areas of specialization						
Elementary/Middle Level						
Reading/Language Arts						
The Reading Specialist					✓	🌐
Middle Level/Secondary						
Educational Computing, Design and Online Learning						🌐
Digital Teaching and Learning						🌐
English as a Second Language					✓	🌐
Teacher Leader/School Improvement						
Mathematics Education						🌐
Online Course Design				👤		🌐
Teaching and Learning				👤		
<b>Department of Educational Leadership</b> – For details, call 785-532-5535 or edlea@k-state.edu						
Adult and Continuing Education	🎓					🌐
Adult and Continuing Education		🎓	🎓			
Adult Learning				👤		🌐
Leadership Dynamics for Adult Learners				👤		
Qualitative Research				👤		
Teaching English as a Second Language for Adult Learners				👤		🌐
Educational Leadership	🎓					🌐
Educational Leadership		🎓				
<b>Department of Special Education, Counseling and Student Affairs</b> – For details, call 785-532-5541 or secsa@k-state.edu						
Academic Advising	🎓			👤		🌐
College Student Development	🎓					
Counselor Education and Supervision			🎓			
School Counseling	🎓					
Social Justice Education				👤		🌐
Student Affairs in Higher Education			🎓			
Special Education	🎓	🎓				
High Incidence Special Education					✓	
Low Incidence Special Education					✓	🌐
Teaching Students with Autism Spectrum Disorders				👤		🌐
<b>Dean of Education</b> – For details, sjegradcert@k-state.edu						
Social Justice Education				👤		
Social Justice Education						🌐

\* This chart is for information purposes only. Please check the graduate catalog or with the department for details. For more information, visit [coe.k-state.edu/academics/graduate](http://coe.k-state.edu/academics/graduate).



# Table of Contents



<b>Greetings from Dean Debbie Mercer</b> .....	<b>4</b>	<b>Around the college</b> .....	<b>16</b>
<b>Alumni Fellow, Brooks Barta</b> .....	<b>5</b>	<b>Art educator colors our world</b> .....	<b>18</b>
<b>Career-changers' pathway to teaching</b> .....	<b>6</b>	<b>KELI plays key role in addressing state's most crucial education issues</b> .....	<b>19</b>
<b>School counselors spread the "magic" and help kids fulfill dreams</b> .....	<b>10</b>	<b>New faculty</b> .....	<b>20</b>
<b>Going the distance for Kansas</b> .....	<b>13</b>	<b>Roll call</b> .....	<b>21</b>
<b>Wildcat Nation and Osage Nation unite</b> .....	<b>14</b>	<b>Artwork</b> .....	<b>back cover</b>

## About the Cover:

Five hundred ceramic tiles made by students at Marlatt and Northview Elementary schools in Manhattan and students at Miltonvale Grade School have been installed on the first floor in Bluemont Hall. The project was initiated by art instructor Trina Harlow to commemorate the college's 50th anniversary. Children and grandchildren of several faculty members also created tiles, making them part of the college's history in a whole new way.



## College of Education Administration

**Debbie Mercer, dean**

**Linda P. Thurston, professor and associate dean for research and external funding**

**Paul Burden, professor and assistant dean of teacher education**

**David L. Griffin Sr., associate professor, assistant dean and director of the Center for Student and Professional Services**

**David Thompson, professor and chair of the Department of Educational Leadership**

**Ken Hughey, professor and chair of the Department of Special Education, Counseling and Student Affairs**

**F. Todd Goodson, associate professor and chair of the Department of Curriculum and Instruction**

## Left:

The college produced its first-ever viewbook for prospective students. Plans are in place for the next edition to be digitized.

**Notice of Nondiscrimination**  
Kansas State University is committed to nondiscrimination on the basis of race, color, ethnic or national origin, sex, sexual orientation, gender identity, religion, age, ancestry, disability, military status, veteran status, or other non-merit reasons, in admissions, educational programs or activities and employment, including employment of disabled veterans and veterans of the Vietnam Era, as required by applicable laws and regulations. Responsibility for coordination of compliance efforts and receipt of inquiries concerning Title VI of the Civil Rights Act of 1964, Title IX of the Education Amendments of 1972, Section 504 of the Rehabilitation Act of 1973, the Age Discrimination Act of 1975, and the Americans With Disabilities Act of 1990, has been delegated to the Director of Affirmative Action, Kansas State University, 214 Anderson Hall, Manhattan, KS 66506-0124, (Phone) 785-532-6220; (TTY) 785-532-4807.

Patrice Scott is editor of Connections Magazine, which is published annually. Share story ideas with her at **785-532-2521** or **patrices@k-state.edu**. Photography was contributed in part by Rusty Earl and Mary Hammel. This magazine was produced in cooperation with the Division of Communications and Marketing.

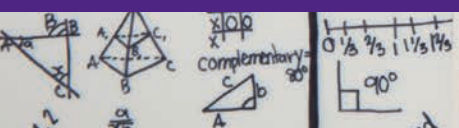




*Educating is impacting lives!*  
**Dean Debbie Mercer**  
*Leading us the heart of education.*

**C&I Cha**  
**Dr. Tod**  
**Goods of**  
*"You can always turn around."*

## Greetings from Dean Debbie Mercer



Hello!

We are excited about this edition of *Connections* because there are so many great stories to share with you. It

was very difficult to condense the work of so many people into a publication but we did our best!

First, I'd like to touch on the Kansas commissioner of education's Blue Ribbon Task Force on Teacher Vacancies and Supply Report released in summer 2016. As chair of the Kansas State Department of Education's professional standards board and dean of the college that produces the most education graduates in Kansas, I anxiously awaited this report and its recommendations. As a grandmother and former kindergarten teacher, it's very easy for me to see the link between public policy and its effect in the classroom because all I have to do is picture my granddaughters. If a policy is best for them, then it is likely good for everyone's children and grandchildren, and I remain committed — unwavering, really — in my belief that students are best served when highly qualified and credentialed professionals lead classrooms.

What I am specifically happy to share is that there are a number of initiatives identified in the blue ribbon report that our college has already enacted:

- Hiring a bilingual recruitment coordinator to increase the number of teacher candidates in the pipeline;
- Creating the Master of Arts in teaching so professionals with bachelor's degrees can become credentialed elementary teachers in just one year;
- Increasing the use of technology collegewide, so that our graduates, especially in southwest Kansas, can address communities' cultural and financial considerations; and
- Launching EdCats, an innovative retention program for early-career teachers.

In addition, the Kansas Educational Leadership Institute, or KELI, was specifically named in the report as central to providing school leaders the information and skills needed to create a culture that retains outstanding teachers. The college and its partners laid the foundation for KELI in 2008, and the first cohort was in 2011. In five short years, this program is already viewed as invaluable to Kansas classrooms.

Every seven years, the college undergoes an accreditation review and 2016 was our year. This is an enormous amount of work, and I am pleased to report that the college remains accredited and there were no areas for improvement. I want to thank the faculty for developing such amazing courses, and

personally thank the leader of this yearlong effort, Dr. Paul Burden. His leadership and organizational skills are second to none, and I had complete confidence entrusting this project to him.

While external accreditation is evidence of impactful programs, I hope you focus on the people highlighted in this issue. It is through these creative and dedicated educators that the complex challenges of our profession and our society are being addressed. Now, perhaps more than ever, our state and country need us to take action and advocate for our greatest resource — our children. Your voice is important, and I challenge you to thank a teacher or encourage someone to consider the profession if you believe they would be a great teacher. Together, we will continue make a difference.

I encourage and invite you to stay connected with the college by following us on Twitter or friending us on Facebook. Please stop by Bluemont Hall the next time you are on campus and see all the friendly and familiar faces in brighter, updated spaces.

With purple pride,

*Debbie Mercer*

Debbie Mercer



# 2016 alumni fellow proves his success as teacher on field and off

Intelligence. Toughness. Team.

Those are the cornerstones behind winning football coach Brooks Barta's philosophy of success on the field and in the classroom.

Barta, the College of Education's 2016 alumni fellow, is the college algebra/calculus teacher and head football coach of the Holton High School Wildcats in Holton, Kansas. He has led the Holton Wildcats to 20 winning seasons (2009-41) and three state championships during his 21-year tenure. But it's his passion for teaching that attracted the college's attention, earning him the highest honor as an alumnus.

"I feel like I'm the teacher I've always been," Barta said, seemingly surprised about the recognition. "I'm very humbled that my name even came up for consideration. I enjoy the process of teaching kids about how to be successful in college and vocational school and helping them develop good habits."

Becoming the teacher he is today has been a long road, much like the late-night bus rides home with his dad's team after away games. His father is Roger Barta, the legendary coach of the Smith Center Redmen, the team that holds the nation's longest winning streak in high school — 67 consecutive games — and inspired the book "Our Boys."

Brooks Barta had great teachers and was blessed with two world-class mentors: one through genetics; the other through hard work as he was a three-time team captain for the K-State Wildcats under the venerable coach Bill Snyder.

"Playing for coach Snyder is like getting a degree in organizational leadership," Barta said. "He leads both by example and creating a culture of daily improvement in all phases of a person's life. Growing up watching my father was like getting a Ph.D. in sports psychology. He had a way of recognizing what makes people tick and motivating them to realize their potential."

But the perennial Wildcat had to find his own winning strategy

in the classroom, and he credits a test the faculty at his school took several years ago to identify their natural talents. Simply put, the coach needed a new game plan in the classroom.

"I discovered that most of my career I was teaching in a way that I was taught, the way my father taught, which was the way I thought you were supposed to teach math," he said. "I came to the realization that I was different from that. I needed a lot of change. I needed creative avenues. When I looked back on it, I felt like that was the way I coached. So I really started teaching class with more flexibility, like I coach, and I was OK with the things I wasn't that good at and spent more time doing the things I was good at. As a teacher that was a pretty big moment for me, and it's helped me develop over the last seven or eight years."

Barta lives in Holton with his wife, Tonya, and their sons, Mason and Tabor. Mason is majoring in industrial engineering at K-State and represents the second generation of Barta's on the field with Coach Snyder, where he will learn new lessons on intelligence, toughness and team.



# New program offers career-changers' pathway to teaching

What happens if you didn't heed that little voice urging you to become an elementary school teacher and instead went into another field? The answer for one group of trailblazers is they found another way, thanks to the College of Education.

Forty-seven career-changers — in their 30s, 40s, 50s and a 60-year-old — are enrolled in the college's Masters of Arts in teaching, or M.A.T., program, to pursue their dreams of becoming elementary school teachers. Launched in May 2016, the M.A.T. is an intensive 12-month online degree program during which the student teaching component is completed via distance supervision. With only three weeks of advertising, the program attracted 70 applicants — seven times the number expected.

Thomas Vontz, professor of curriculum and instruction and lead architect of the M.A.T., said K-State, like many universities across the country, receives calls daily from people who have an undergraduate degree, significant life experience and want to teach.

"Prior to creation of the M.A.T., these career-changers were required to have access to our campus and complete a litany of

undergraduate and graduate courses," Vontz said. "For many highly qualified students, the geographic, financial and educational barriers were too great. The M.A.T. provides a reasonable pathway to teaching."

## Game changer

Alan Cunningham, retired superintendent of USD 443 in Dodge City, Kansas, was the first superintendent in the state to nominate candidates for the degree program he deemed a game changer.

"Dodge City needs teachers trained from a high-quality institution like K-State," Cunningham said. "The culture of our majority Hispanic/Latino population is such that the extended family members remain together. Many would pursue a bachelor's degree and beyond if they were available without requiring them to leave the community and their families for extended periods of time."

Vicki Sherbert, assistant professor of curriculum and instruction, believes this is a game changer for elementary students as well.

*M.A.T. student Andrew Evans' experiences as an underprivileged child are fueling his deep desire to inspire children. Despite many challenges, he's earned several degrees.*





"They (M.A.T. students) are combining their previous life experiences with a focused passion to serve students," she said. "They bring a wisdom to the table that can really only be gained by living life, regardless if they weathered difficult storms or if they've had positive experiences."

The inaugural cohort, which is nearly 20 percent male, includes professionals across Kansas such as Topeka law librarian Andrew Evans and Overland Park hospitality manager Phillip Manuel. They have a great deal in common: Both of their fathers served in the military; both men value education; and both coach youth sports. The similarities end there.

Born to American high school sweethearts in England, Manuel's dad was an officer in the U.S. Air Force and the family moved frequently before his father retired and they returned home to Manhattan. Manuel graduated from Manhattan High School, then from K-State where he earned a bachelor's degree in hotel and restaurant management. His close-knit family boasts 30 family members, nearly half of whom are educators.

"I will make No. 14," he said with pride.

Manuel was electrified by the discussions about how to guide students through a concept in Vontz's class, then captivated by conversations in the course about diverse learners.

"This class is challenging because I've never really thought about my privilege, my race, or my position in society," Manuel said. "I only know the world from my own identity, and once I started reading in Dr. Sherbert's class, it challenged my feelings, and it has me thinking about events in the news."

Privilege was essentially a nonissue for Evans as his life was vastly different than his virtual classmate's. Abandoned by his mother at the tender age of 10 and left to the devices of his father, a drug-addicted, alcoholic Vietnam veteran who suffered from post-traumatic stress disorder, life was not easy.

"I always felt like we were one paycheck away from living in a cardboard box," Evans said.

Education must have offered some sense of stability to the impressionable young man. He graduated from high school, then earned an associate's degree in automotive technology and a bachelor's degree in business administration. He went on to law school, then earned a master's degree in library science. Evans spent the last 14 years as a law librarian at Washburn University in Topeka, Kansas.

"In 1998 I went to law school in the hopes of making the world a better place and fight for justice, but now I realize I can do more in a public school classroom," Evans said. "I feel that now, more than ever, Kansas needs good people who will fight for children, and that's why I'm here."

Evans and Manuel both researched other programs in Kansas but decided on K-State's program.

"I saw an ad on Facebook and the timing was great," Evans said. "I called Tom Vontz and he had a ton of information. Tom was very confident that I could get this done, and the fact that he was going to be there for me made the decision even easier."

Manuel appreciates the pace.

"It's core. It's focused, it's fast," he said. "The other big advantage is it's a one-year master's degree and that makes a difference in your pay."

While the pay bump is a benefit, for Manuel it's no longer the driver.

### About the 47 students in the M.A.T. program:

- Nearly 20 percent are male, twice the number of male students in the college's undergraduate program;
- While some programs are seeing a decrease, the college has seen a 10 percent increase in the number of teachers it is producing thanks to the M.A.T.; and
- More than half of the group, 53%, received Kansas Transitions to Teaching grants.



M.A.T. student Phillip Manuel left his comfortable position with a restaurant supply company in Lenexa to become an elementary school teacher in an underserved school in Kansas City, Kansas.

"For my whole life, I feel like I've been chasing money," he noted, adding money was the reason he didn't pursue teaching as an undergraduate. "You start getting in the game and you start moving toward bigger checks, but pretty soon all your conversations are about markups, budgets and margins. There's got to be more to life than the size of a paycheck."

Vontz said these are exactly the people the profession needs.

"Andrew and Phil are precisely the kind of students we were hoping to attract — bright, talented and experienced adults who are pursuing teacher certification for all of the right reasons," Vontz said. "As people mature, the need to help people and serve others often grows. Both Andrew and Phil understand that few professions offer such a direct and profound link to serving others than does elementary school teaching."

## Win-win

Evans and Manuel were two of 25 recipients of the Kansas Transitions to Teaching fellowships from a grant through the Kansas Board of Regents that provided a \$6,000 scholarship for Master of Arts in teaching students planning to work in underserved school districts in Kansas. The cost of the graduate program is approximately \$16,000.

"The fellowship is one selling point of the program," Cunningham said. "Funds are tight for everyone, and past experience tells us that when a portion of these types of expenses are defrayed, participation increases."

David Allen, associate professor and director of field experiences for the College of Education, said distance supervision during the

clinical semester will be achieved with the latest technology. A tablet or smartphone with a camera will be attached to a SWIVL, and teaching sessions will be video captured.

"The whole idea behind the M.A.T. is we will meet the needs of the graduate students no matter where they are," Allen said. "M.A.T. students have responsibilities, families, jobs, that they can't necessarily leave and move to Manhattan. I have a spreadsheet that indicates where each student wants to be placed for student teaching, and that's a whole different ballgame than 'we're here in this brick-and-mortar building and there is only one way to become a teacher and that's by coming to us.' Their voice in this is critical because we're branching out this May."

Vontz said the goal is to learn as much as possible and make improvements because the program will be offered to students outside of Kansas next year.

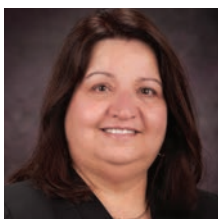
"The college's plan is to make the M.A.T. even better for Cohort 2 and expand its footprint across the region, primarily in Oklahoma, Colorado, Nebraska and the Dakotas," Vontz said. "We know there are many career-changers, especially ones who are geographically isolated from teacher education institutions, who might benefit from the program. We also know there is a strong demand for highly qualified elementary teachers across the region."

So, for all of those professionals, like Manuel and Evans, who didn't heed that little voice urging them to become a teacher, their dream is just one website and one year away.

For more information about the M.A.T., please visit [global.k-state.edu/education/mateaching](http://global.k-state.edu/education/mateaching).

## Several education faculty members are career changers

From theater to journalism to music performance to clothing and textiles, the road to the classroom has many paths. Just like the students in the M.A.T. program, several College of Education faculty members, including the college's top administrator, received bachelor's degrees in other fields — proving the need for programs like the M.A.T. Here's what these experienced faculty members have to say about their decision to following their passion.



**Lori Goodson**, *assistant professor of curriculum and instruction*

"Because of my love for writing and wanting to make a difference, I received a Bachelor of Science in English and journalism and was a newspaper writer and editor for more than two decades. I earned a Master of Arts in English education because I

needed a change and a challenge. Teaching middle school definitely accomplished both! Looking back on my journalism career, I realize I was always teaching — working with new reporters and interns, leading and teaching my department by supporting my staff's growth, and volunteering to present at local schools and more."



**Trina Harlow**, *instructor of curriculum and instruction and doctoral candidate*

"While I was not one of those students who knew I wanted to be a teacher when I graduated from high school, I quickly found my way to teaching and my life's calling, and I've never looked back. My bachelor's degree was in clothing and textiles and courses

were weighted heavily in art. I thoroughly enjoyed my first career as a fashion designer in Dallas. Within a couple of years, however, I realized that my natural abilities and interests in teaching were overtaking my interest in being a designer — something was just missing in my life. I felt a strong calling to give back and to make a difference in this world. I was surrounded by so much need and I knew I could contribute to the school environment and the lives of children and youth. I began teaching in various settings in 1993 and eventually became a licensed teacher. Being a teacher is the most meaningful calling upon my life, other than being a mother. There is nothing more meaningful I could do with my time. I cannot imagine not being a teacher."





**Marilyn Kaff**, *associate professor of special education, counseling and student affairs*

"I was a history and theater major and worked in children's theater in Minneapolis, but quickly figured out I needed a day job after I did some summer stock. That's when I went back to school to get my teaching degree and completed my elementary

student teaching in a kindergarten room at the Topeka State Hospital. I fell in love with children with emotional and behavior disorders. I received a scholarship to pursue a master's degree in special education at K-State and have been in special education for the duration of my career."



**Debbie Mercer**, *dean of the College of Education*

"My initial degree was in family and child development. While I loved working with very young children, exposure to elementary teachers and my curiosity for learning led me to an elementary degree, library science endorsement, and eventually,

a doctorate. I've earned four degrees from K-State, and each time my professional path led me on a new journey, K-State's College of Education was there for me, providing the knowledge and skills I needed for this lifelong learning journey. Looking back now, I see now how each step prepared me for what was to come."



**Lotta Larson**, *associate professor of curriculum and instruction*

"My first bachelor's degree was in economics from K-State. However, I began my career as a parent educator for Parents as Teachers and quickly discovered that I loved working with parents and children. So, I came back to K-State and earned three degrees from the

College of Education. I have loved being a teacher, regardless if that was in the field of early childhood, in the elementary classroom or at the collegiate level."



**Jim Teagarden**, *associate professor of special education, counseling and student affairs*

"I was raised with the core value of helping others is what makes for a successful life. In my small town there was a child about my age who had significant mental health issues that caused her and her family many challenges. This was the driving force

behind my decision to seek a degree in psychology. I made an early discovery: Little if any impact is made within the 50-minute therapy session; it's the other 23 hours of the day that make the difference. So, I went back and got an education degree and spent my career working within a school setting with children who had many of the same challenges."



**Mickey Losinski**, *assistant professor of special education, counseling and student affairs*

"My bachelor's and master's degrees are in fine art, sculpture and ceramics. I always wanted to teach and planned to become an art faculty member; however, I was not necessarily a good fit within the fine art world. After five years working in the

theatre in Seattle, I became a K-12 teacher through an alternative certification pathway in Florida. For a little over two years, I taught in a middle school in a self-contained classroom for students with emotional disturbances before becoming an art teacher at both the middle and high school levels. However, my passion for helping students with mental health challenges was not being utilized in the art classroom and I decided to pursue a higher degree in special education at Clemson University."



**Wendy Troxell**, *director of the Center for Excellence and Research*

"My bachelor's degree was in music performance, not music education. My father was a music professor... in fact, as my department chair, he was my freshman advisor in college! My minor was in physical education and health. After college, I

realized that I wanted to teach after all, so I went back to pick up certification. I ended up loving it and even though it took a couple more years, it was an important path for my personal and professional growth."

## Masters of Arts in Teaching Courses and Sequence

Semester	Courses	Hours
Spring intersession	EDCI 710 Social Foundations of Education	3
Summer	EDCI 702 Curriculum, Instruction and Assessment	3
	EDCI 716 Teaching Diverse Learners	3
Fall	EDCI 791 Teaching Science and Mathematics in the Elementary School	4
	EDCI 792 Teaching Social Studies, Reading and Literacy in the Elementary School	4
Winter intersession	EDCI 793 Teaching Health, Movement and Fine Arts in the Elementary School	4
Spring	EDCI 801 Internship in K-12 Schools	4
	EDCI 760 Action Research in Education	3
	EDCI 890 Master's Project	1
Total		31



# From Compton and Clay Center to Counselors

School counselors spread the 'magic' and help kids fulfill dreams

"You're gonna be something."

These four simple words transport Joe Hall, a hulking 36-year old former NFL football player and graduate student in school counseling, into a star-struck, 9-year-old boy hearing the words for the first time. It was July 1989, and Hall was at a basketball camp in his hometown of Compton, California. He still gets goosebumps when he recalls that magical moment.

"There were hundreds of kids in the gymnasium," Hall's eyes beam as he recounted the story. "When all of the sudden, he walked up to me and said, 'You're gonna be something.'"

"He" was Magic Johnson — Hall's idol.

"Why did he pick me?" the stunned child asked himself repeatedly. "I was big for my age, but wasn't any bigger than other big kids. Then I figured out that I'm supposed to be a good athlete. I'm supposed to be a good student. I knew if I could get out of there — Compton — everything would be OK."

The famed movie "Straight Outta Compton" depicted the stories of many people Hall grew up around, and while he got out, the life path of the now happily married father of four resembled more of a winding road than a straightaway. As the nation's largest running

back to ever rush more than 100 yards in an NCAA game, which he did three times at K-State, Hall graduated with a degree in social sciences. He headed to the NFL where he played for the Kansas City Chiefs, the St. Louis Rams and the Oakland Raiders. He experienced the highs of adulation and the lows of bashing. It was a lot to deal with, and Hall accepts full responsibility for the good — and bad — decisions he made along the way.

For nearly 30 years, "You're gonna be something" replayed in his mind. Sometimes those words emboldened him; other times he couldn't measure up. Regardless, they were always there. When the sun set on his NFL career, he started coaching at the collegiate level.

Torn between being away from his wife, Hollie, and kids during the week and the players he passionately wanted to mentor, the running back coach had a tough call to make. That's when he decided to get his master's degree in school counseling.

Judy Hughey, associate professor of special education counseling and student affairs, is elated Hall chose to return to K-State for his master's degree.

"A counseling degree is a great option for people like Joe looking to change careers," she said. "You can have a bachelor's degree in any field and pursue a master's in school counseling."

Joe Hall



Kristin Wright







Joe Hall, right, interns at Riley County High School with school counselor Samantha Kriley, left.

Hughey believes Hall possesses many attributes of a great school counselor: self-awareness, competence, an understanding of culture, warmth, unconditional regard and friendliness.

"Joe needs a large physique to carry his big heart," Hughey said. "He has an infectious smile and is a magnet for anyone who meets him." In her professional opinion, he has everything — and then some — that a great school counselor needs. While personality traits are positives, school counselors need intense preparation.

The college's graduate degrees in counseling are accredited by the Council for Accreditation of Counseling and Related Educational Programs, or CACREP. Graduate students are awarded their master's degree upon completion of the program. They are fully credentialed as a K-12 school counselor after passing the Praxis exam. An additional 15 hours are available for students interested in pursuing a private practice license.

True to its land-grant mission and reaching new audiences, the college will begin offering the program at K-State Olathe in June.

"We are excited about having a cohort present at the Olathe campus primarily because we see a need for more school counselors in Kansas," Hughey said. "This is an opportunity to make our program more accessible and prepare professionals for what I believe is one of the most rewarding careers in education."

There's such high demand that K-State graduates typically have jobs before they complete the program. Hughey said there are nearly 1,300 licensed counselors in Kansas, and if Kansas Commissioner of Education Randy Watson has his way, there will be more.

"Dr. Watson and the staff at KSDE have raised awareness about the future educational and employment needs in Kansas," she said. "Comprehensive counseling programs address the needs of all students in K-12 schools with the primary goal being to enhance student learning. Counselors specifically provide help with academic, career awareness and exploration, and social-emotional needs, and they intervene at crisis points."

Kristin Wright, counselor at Lincoln Elementary School in Clay Center and the 2015-16 Kansas School Counselor Association's K-12 Outstanding Counselor of the Year, said one of the greatest benefits of her position is building relationships with the students and teachers.

"I am very lucky in that I know every child in the school," Wright said. "I've been in their classrooms and work closely with all of the teachers so the relationships are already built. That's a tremendous advantage in the event of a crisis."

Wright recently began her day with hugs from children when she arrived in a classroom with a "bee-ing cooperative" lesson plan, which aligned with the school's 7 Habits of Happy Kids program. The children performed their tasks and waited patiently for their next instruction, but it turns out some of those busy little bees have complicated hives.

"There are some tough lives here," Wright said. "In our school, there are kids who are being fostered, there are kids living with grandparents because the parents are addicted to drugs or they left. There are kids who receive backpacks of snacks; I give out 40 a week, and that's not enough. Even in our small town, I don't think many people understand the extreme poverty and chaos some of our kids go home to. You'd never know which ones those kids are because the teachers treat them all with dignity and respect. They are all given a chance."

While there are challenges, Wright lauded her community for its incredible support system, which includes supportive church members, highly qualified teachers and administrators, and active local charities. Because she has been in the district for so long, she is now teaching her former students' children, and she sees evidence of change.

"So many of the kids who came from difficult situations are breaking the cycle," she said. "They've become great parents, and it's really wonderful to see."

Wright said other than the title "counselor," very few similarities exist between today's school counselors and those of the past.

"I wish everyone in the world knew that the position of the school counselor is so different than the school counselor we may have had in high school," Wright said. "It is about being proactive, data-driven, observant and knowledgeable. On any given day, counselors have to be leaders, best friends, teachers, advocates and mediators."

The doctoral candidate credits much of her success to the College of Education.

"I came out of K-State with my master's degree very, very prepared," she said. "K-State's program is comprehensive and asks you what you will do for all kids? What do you need to do for some kids? I also think K-State does a great job of advocating for the need for school counselors across the state. They also encourage us, as doctoral students, to advocate as well."

Dedicated professionals like Hall and Wright will have a tremendous impact on the lives of Kansas kids and ultimately, the future. While their backgrounds and roads to the profession are vastly different, each will contribute to student success by making each child feel like "they can be something."





## College's counseling camp is overwhelming success

About 350 counselors from schools across Kansas attended the 2016 Counselors CAN! conference in Manhattan organized by Judy Hughey, associate professor and 2016 Kansas School Counselor of the Year, and Ken Hughey, professor and chair of the special education, counseling and student affairs department.

Randy Watson, Kansas commissioner of education and K-State alumnus, presented "A New Vision for Kansas — New and Critical Roles for School Counselors." Shane Lopez, Gallup senior scientist and author of "Making Hope Happen," presented "Making Hope Happen in our Schools." Julie Baumgart, board chair of the American School Counselor Association, presented "Advocacy is Not a 4-Letter Word" and Clark Flatt, president of The Jason Foundation, presented "Youth Suicide: The Silent Epidemic."

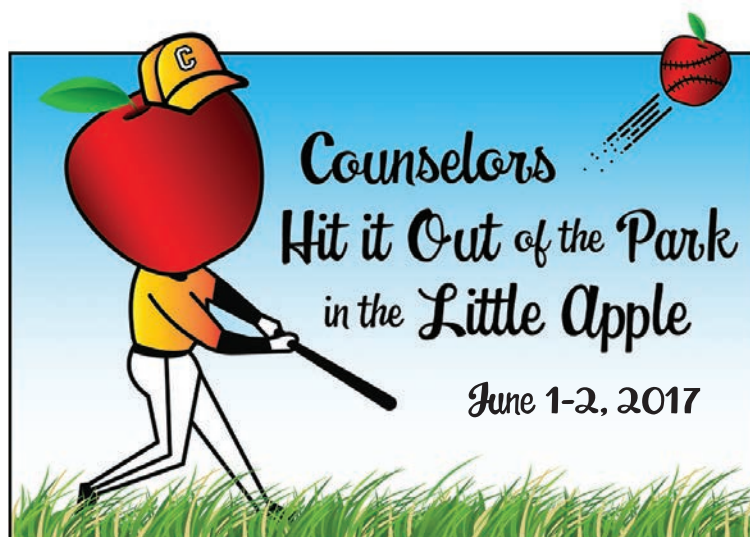
Because of the timeliness of Kansas passing the suicide prevention legislation, the Jason Flatt Act, three media outlets covered the conference, providing enormous exposure to the profession.

"School counselors are acutely aware of the issues students are dealing with but it's important for parents, as well as all citizens, to understand the role school counselors play in public schools," Judy Hughey said. "Issues like career awareness and preparation, peer pressure, bullying, family issues, poverty, addiction, abuse and special needs can impact student success if they are not adequately addressed. There is so much we can do, and that's actually what inspired the theme Counselors CAN!"

She praised Watson for calling attention to the need for more counselors in Kansas schools and to the tie between student success and the state's long-term economic success.

"We are elated Commissioner Watson is advocating for more school counselors and has identified the critical role school counselors play in not only social-emotional areas but in career planning as well."

Hughey said planning for this year's conference is well underway and she has reached out to potential keynote speakers. Mark your calendars for the 2017 school counselors conference with the theme of "Counselors Hit It Out of the Park in the Little Apple." It will be June 1-2 at the Hilton Garden Inn in Manhattan.



### Program Requirements for the Master of Science in School Counseling

48 credit hours

#### A. Core Requirements (27 credit hours)

EDCEP 721	Mental Health in Schools
EDCEP 822	Issues and Best Practices in Secondary School Counseling
EDCEP 823	Counseling Theory
EDCEP 852	Career Development for School Counselors
EDCEP 856	Issues and Best Practices in Elementary School
EDCEP 857	Counseling

#### Counseling Program Management

EDCEP 871	Consultation for Counselors (online)
EDCEP 921	Development Across the Lifespan for School Counselors
EDCEP 951	Multicultural Counseling (online)

#### B. Research and Appraisal Requirements (9 credit hours)

EDCEP 715	Principles of Assessment
EDCEP 815	Using Tests in Counseling
EDCEP 816	Research Methods in Education (online or on campus)

#### C. Clinical Requirements (12 credit hours)

EDCEP 858	Group Processes
EDCEP 877	Practicum in Counseling
EDCEP 887	Counseling Internship — elementary and secondary level (6 credit hours total over two semesters)

For EDCEP 887: The counseling internship will consist of 600 clock hours under weekly supervision of a licensed school counselor and counseling program faculty member. The student will attend class for group supervision and provide at least 240 clock hours of direct service in the school setting. Included activities are individual counseling, group work, developmental classroom lessons, and consultation. The student will earn a total of 6 credit hours of internship over two semesters. Students are required to have liability insurance coverage during the practicum and internship. The parallel pathway option is required for all students who do not hold a professional teaching license.

The parallel pathway licensure option requires additional school field experiences and activities over two semesters as part of the graduate program. See Dr. Judy Hughey to develop an individual plan.

A professional portfolio is developed during the program and submitted for final review during the final semester of one's program. A master's comprehensive written exam is completed during the final semester of one's program. A portfolio rubric and format guidelines are provided throughout coursework and on the program webpage.

# College turns to Swivl for distance supervision

Future teachers are evaluated through the critical lens of a clinical instructor. For the first time in college history, however, the initial lens capturing students in remote districts doesn't belong to a human, but rather to a camera.

David S. Allen, associate professor of curriculum and instruction and director of field experiences, said he is pleased with the initial results of the college's monumental effort to expand its distance supervision capabilities using today's technology. Over a two-year period, he identified how to expand into distance supervision, researched the best equipment, and tackled important legal issues surrounding video capturing of pre-service teachers and K-12 students. It is, in his opinion, a 21st century-take on the university charter.

"We are an institution that has a land-grant mission to serve the people of the state of Kansas no matter where they are and to supply them with high-quality teachers who are ready for the classroom," Allen said. "So the question becomes, 'how can we reach the four corners of Kansas to meet the needs of our stakeholders, which are future teachers and the school districts?'"

Four roughly three decades, the vast majority of future teachers completed their clinical semester in one of the college's Professional Development Schools, which were largely in Manhattan-Ogden USD 383 and Geary County Schools USD 475. Allen emphasized the new distance supervision program is not replacing the PDS partnerships, but rather extracting the best elements of the award-winning model and incorporating them into the distance model.

"We took the best of our program and asked, 'how can we make that work at a distance,'" he said.

How exactly can technology bridge the distance while maintaining the college's and profession's quality and standards? Allen concluded the Swivl app is exactly what the college needed, allowing for field placements in high-need districts across the state.

A smartphone or iPad with the Swivl app is placed on a tripod in the classroom. A small tracking device called a marker is paired with the app and is clipped to the future teacher's lanyard, allowing the device to follow movement around the classroom; audio is captured via Bluetooth. Future teachers must upload 12 videos spanning a 16-week semester and they must be teaching in a small-group or whole-group situation.

"I can log in to students' accounts and review the various videos they uploaded," Allen said. "Then I can read the comments a clinical instructor offered, which are categorized according to our rubrics. Later in the semester you can see where the students started uploading lesson plans, then you can see the lesson. The evaluation process and all of the videos are housed here."

While the lens may have changed, it's still through the critical lens of clinical instructors and faculty that future teachers are evaluated, mentored to improve, and ultimately recommended for licensure.





# Wildcat Nation and Osage Nation unite



A doctoral candidate in educational leadership discovered he could pursue his life's passions — education and culture — while advancing these causes for indigenous populations nationwide.

"I am Osage, and I am a teacher," said Alex Red Corn, member of the Osage Nation in Pawhuska, Oklahoma.

Drawing on the expertise of education leaders in the Osage community and in the College of Education, Red Corn has collaboratively built a partnership program called the Osage Nation Educational Leadership Academy, or ONELA. Melvina Prather, interim director of the Wah.Zha.Zhi — which means Osage — Early Learning Academy, is the Osage liaison and a key contributor to the academy's design and delivery.

The program provides leadership training for emerging Osage education leaders with the goal of building upon already established professional education capacities, while also exploring how leadership in education can move Osage skills, knowledge and worldviews into the future. The hybrid program offers classes through K-State Global Campus with face-to-face meetings on the

Osage reservation and occasional student trips to the Manhattan campus. Upon completion of the academy, students earn a master's degree that prepares them to be leaders for P-12 schools with an emphasis on educational administration.

David C. Thompson, chair of the department of educational leadership and Elvon G. Skeen endowed professor, said this extraordinary opportunity was made possible by an extraordinary person.

"Alex's talent, expertise, deep knowledge and passion for the new Kansas State University-Osage Nation partnership are impressive and unbounded," Thompson said. "His drive and insights are the force behind the success of the partnership — it could not happen without him, and it is happening because of him. He is, in a word, simply an extraordinary leader who is bringing a mutually beneficial deep learning experience to both K-State and the Osage Nation that is without precedent."

Red Corn was one of four sons born to an Osage father and Irish Catholic mother. After moving away from the reservation during their elementary school years, all of the boys attended public







Alex Red Corn was one of five voices chosen for the college's documentary on social justice in education in its signature series titled "A Walk in My Shoes." Learn about the challenges Red Corn faced growing up in two worlds and his struggle to try and navigate an educational system that basically stopped teaching about Native Americans after the late 1800s while preserving his culture. "When I was a child, I knew I was Osage but I also knew that I was white and blond," Red Corn said. "I chose teaching because I realized its power in affecting change in young people, and I want to be a part of that. "We're fighting a school curriculum that basically stops teaching about the removal of Indians in the late 1800s," he said.

To watch the documentary, visit [coe.k-state.edu/walk-in-my-shoes/social-justice](http://coe.k-state.edu/walk-in-my-shoes/social-justice).



schools in Johnson County, Kansas, then earned undergraduate degrees from the University of Kansas. Now a married father of two, Red Corn is on a quest to enhance the education capacities of the Osage Nation and other native nations in a sincere and meaningful way through partnerships. After spending seven years as a social studies teacher in the Kansas City area, Red Corn is dedicating his research to multiculturalism in education with a focus on the needs of American Indians.

"American Indian students across the country and their respective tribal governments find themselves in unique cultural, political, economic and social situations," Red Corn said. "Some tribes are trying to save their languages by building their own schools and decolonizing the curriculum. Other tribes are partnering with local public schools and looking into alternative ways to reach their students by hosting after-school programs, Head Start and preschool, or providing resources for adult education. I'm interested in looking at the different ways tribes and tribal communities are trying to reach their respective educational goals and get a grasp of the settler-state system hurdles that lie in their way."

This fall, 10 members of the ONELA cohort embarked upon a two-year rigorous curriculum linking theory and practice. Thompson said the leadership academy model was intentionally created with built-in

flexibility to adapt to each district or organization's needs.

"The leadership academy model at K-State began approximately 25 years ago and at the same time is new each time it's offered because its purpose and content are carefully tailored to the needs of the partnering school district," Thompson said. "Consequently, all academies

look alike in basic spirit and structure, but each is different in content."

Red Corn understands the inherent challenges in the education system because he lived them.

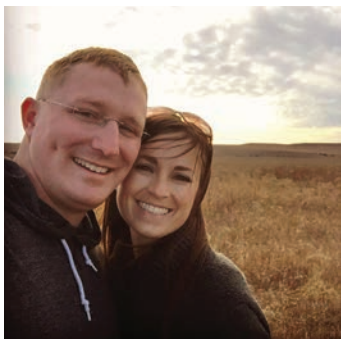
"When you have adults across Indian Country who attended K-12 schools and predominantly white colleges, it's important to understand that assimilation processes set in motion long ago are still in motion in these schools," Red Corn said. "Imagine what it's like when Native American students are required to take U.S. history, U.S. government and English while not even having the choice of taking courses reflecting their own tribal history or language."

The origin of this ONELA partnership can be traced to a phone call. Red Corn, who had recently completed his master's degree in education at KU, called inquiring about the educational doctorate program in educational leadership and described his research agenda. On the other end of the line, Thompson was listening intently, and Red Corn was surprised by the academician's initial response.

"My enthusiasm was without containment," Thompson said. "As a college and department we are entrepreneurial, always seeking new ways to engage learning for leadership. Our faculty believes and knows at the deepest level that leadership makes a measurable difference in schoolchildren's lives, and we believe with equal passion that our leadership academy partnership model is the absolutely right way to engage the P-12 field — as we say, there are no good schools without good leaders."

Debbie Mercer, dean of the College of Education, is grateful for the growth opportunity.

"This academy is an opportunity for us to learn and grow together," Mercer said. "We appreciate the trust the Standing Bear administration has put in us, the unprecedented access, and the many ways this academy will deepen course content across the college."





## College of Education and SMSD partnership



Christy Ziegler, SMSD assistant superintendent of innovation and

performance, said the partnership has many benefits.

"The Shawnee Mission School District is always looking for innovative ways to partner with organizations in ways that provide mutual benefit to both partners," Ziegler said.

"The goal in any partnership is seeking others who

The College of Education and Shawnee Mission School District, or SMSD, entered a partnership that delivers upon the university's land-grant mission in 21st-century style. The three main components are providing student teachers; providing professional development opportunities; and providing a leadership academy for district leaders seeking doctoral degrees.

Over the course of the 2016-17 school year, the department of curriculum and instruction under the leadership of professor and chair Todd Goodson and assistant professor Tonnie Martinez, is piloting a new Professional Development School model called iPDS. A cohort of 18 undergraduates was supervised from a distance through the use of SWIVL robots; 12 signed teaching contracts with the district for the spring semester.

In addition, the Center for Intercultural and Multilingual Advocacy, or CIMA, is working with 10 schools in the district to provide professional development on biography-driven instruction. The schools have been divided into three tiers and each receive programming tailored to their individual needs. The college also offers professional development workshops on technology in the classroom.

The third leg of the agreement is that the SMSD leaders can complete their doctoral coursework by summer 2018 with the target of graduating in fall 2019.

share a common mindset and demonstrated movement to action by seeking continuous improvement in all areas. K-State has been a great partner in helping our district continue to grow in ways that provide ongoing benefit to students, staff and our community."

## Accreditation



The college was formally notified in fall 2016 it had successfully completed national accreditation through the National Council

for Accreditation of Teacher Education, or NCATE. This weeklong comprehensive evaluation, which occurs every seven years, assesses the college in all aspects related to teacher preparation and licensure. This year, the college chose diversity as its target standard, which allowed administrators, faculty and staff to highlight the college's progress and innovation in this important area. Paul Burden, assistant dean for teacher education and professor of education, spearheaded the initiative, and Dean Debbie Mercer praised his unmatched organizational skills and leadership in coordinating this massive initiative.

## Call Me MISTER

In fall 2016, the college kicked off its inaugural year as a partnering institution



with the nationally recognized, Call Me MISTER — Mentors Instructing Students Toward Effective Role Models — program. The mission of the Call Me MISTER program is to increase the pool of available teachers from broader, more diverse backgrounds, particularly for the state's lowest performing elementary schools. Student participants are largely selected from underserved, socio-economically disadvantaged and educationally at-risk communities.

The program places strong emphasis on servant leadership and community development by recruiting pre-service teachers who have a passion for increasing opportunities and educational outcomes among students in their home neighborhoods. The Call Me MISTER program possesses many of the same features as the COE's historic and nationally recognized BESITOS program, in operation from 1999 to 2014.

## CIMA and Project Summit-Mexico



The Center for Intercultural Multilingual Advocacy, or CIMA, was formed in 1996 with its first grant-funded project under the leadership of Socorro Herrera and Kevin Murry. Over the last 20 years, the center faculty and staff have implemented numerous successful recruitment and retention programs as well ESL distance education professional development made possible with more than \$43 million in grants and awards the center has received. To date, CIMA has provided professional development for more than 10,000 teachers

in 100 school districts in eight states while collaborating with eight universities.

In summer 2016, CIMA initiated a new international education partnership with Mexico. Project Summit is a professional development program for in-service and pre-service teachers as well as school administrators from Mexico. It focuses not only on intensive English development through listening, speaking, reading, writing and thinking, but also on those methodological, theoretical and pedagogical elements of effective teaching. Two cohorts, totaling 140 participants, were on the K-State campus for four to six weeks last summer.

Project Summit provided differentiated programming for administrators and teachers, while building in opportunities for frequent collaboration and discussion across groups. While in Kansas, participants practiced their English and further developed their teaching skills by actively engaging in the Manhattan community through internships and local excursions, as well their research and leadership skills through targeted courses and activities.

## EdCats

The number of early-career teachers turning to EdCats continues to grow. Designed to support teachers during the first three years in the classroom, the program addresses teacher retention, one of the most crucial areas identified in the Kansas commissioner of education's Blue Ribbon Task Force on Teacher Vacancies and Supply. EdCat Chats, short videos featuring K-State faculty covering a variety of subjects, are resources available to all early-career teachers and can be found at [coe.ksu.edu/edcats/chat](http://coe.ksu.edu/edcats/chat). Topics range from counseling to art to classroom management to diverse learners and more. New teachers can also check out the EdCats' blog at [edcats.wordpress.com](http://edcats.wordpress.com).

What's impressive is that five of the Kansas State Department of Education's 2017 Horizon Award winners were K-Staters and all were members of EdCats. The awardees:

- Jeremy Holliday, elementary teacher at St. George Elementary School,
- Anna Nusser, social studies teacher at Chapman High School,
- Roger Laubengayer-Mena, language arts and ESL teacher at Highland Park High School, Topeka,
- Lauren Aiello, language arts and ESL teacher at Turner Middle School, Kansas City, Kansas, and
- Courtney Connolly MacCallum, elementary education/special education teacher at Stanley Elementary School, Overland Park.

For more information about EdCats, please contact Tonnie Martinez at [tonnie@ksu.edu](mailto:tonnie@ksu.edu), visit [enewsletters.k-state.edu/education/tag/ed-cats](http://enewsletters.k-state.edu/education/tag/ed-cats), friend us on Facebook or follow us on Twitter @ [WeAreEdCats](https://twitter.com/WeAreEdCats).

## Not Just a Year of Social Justice Education and films

In education, there is great power in sharing personal stories. The college, through the skill and imagination of videographer Rusty Earl, has created and produced numerous documentaries telling the stories of students, teachers, leaders and historical figures who have made an impact in the lives of children. Each documentary is designed to acquaint and educate people about the diverse experiences of individuals and the contexts in which they lived.

Through this thought-provoking medium, the college is addressing broad, complex social issues and making them specific and relatable, hence the name "Not Just a Year of Social Justice Education."

## Upcoming premiere

The college will release the fifth documentary later this fall in its series, "A Walk in My Shoes," which will focus on the successes and challenges first-year teachers experience.

## Degrees of change

The college continues to reach new audiences, whether they are on campus or online. Two programs attracting career-changers to the profession are the Master of Arts in teaching, or M.A.T., and the Master of Science in school counseling.



The M.A.T. degree is a one-year, 100 percent online degree for anyone with a bachelor's degree wishing to teach at the elementary level. For more information about the program, please visit [global.k-state.edu/education/mateaching](http://global.k-state.edu/education/mateaching) or contact Tom Vontz at [tvontz@k-state.edu](mailto:tvontz@k-state.edu).

The school counseling degree is now being offered on the K-State Olathe campus and the first cohort will begin in June. The program is designed to prepare dynamic, professional school counselors to be team leaders who implement comprehensive school counseling programs that are integral to the total educational program. For more information about the program, please visit [coe.k-state.edu/academics/graduate/student-affairs-development](http://coe.k-state.edu/academics/graduate/student-affairs-development) or contact Judy Hughey at [jhughey@k-state.edu](mailto:jhughey@k-state.edu).







# Coloring Our World

## Art educator's vivid vision shapes future teachers

Some people brighten a room just by entering it. However, art education instructor Trina Harlow leaves an impression wherever she goes. This vibrant educator has enlivened the corridors of Bluemont Hall as well as the corners of Kansas and beyond. Her color palette is every bit as bold as her conviction to art education and the ways it connects people and brings out the very best in humanity.

The tireless volunteer, organizer and art champion lives by example. "Visual arts provide the beauty that the human soul craves," she said. "The art education program at Kansas State University is growing art education leaders who will make their districts' art programs exciting and invaluable, and enhance our state, country and world."

### Q. How has art education changed over the years?

A. Art education may have once been about holiday bulletin boards and studying the master artists, but all that has changed. Twenty-first-century educators not only understand holistic education but teach within and outside of a framework that contributes to it. This accelerates an understanding of the ever-shrinking globe humans reside on.

### Q. How does art contribute to other subjects?

A. The magic of art education is an educator can take glue, scissors, paint and paper and turn it into a canvas of learning. Curriculum integration projects, where the arts are combined with math, science, language arts and history, use the arts in invaluable ways. Visual arts offer a unique platform to teach about other cultures, communities, people, groups and countries, and inspire a journey of exploration into our similarities and differences.

### Q. Can you provide an example of an integrated project?

A. My students planned an Afro-Peruvian cajon-making workshop that we took to Syracuse, Kansas, in collaboration with several faculty members at K-State. It was a total arts experience — a STEAM workshop. STEAM stands for science, technology, engineering, art and math. I hope to take more workshops to small rural schools around Kansas as they seem to be the ones struggling the most to keep their arts programs alive.

### Q. What influenced you the most?

A. Teaching school short term in Uganda, Ecuador and Switzerland placed me in situations of abundance and in situations of great need. More importantly, these opportunities allowed me to grow the lens through which I viewed art education. Other travels also exposed me to talents and skills of folk artists, cultural identity and the rich way in which color is created and used around the world.

### Q. How do your international experiences benefit Kansas students?

A. Most classrooms in Kansas and across the country are not only multicultural but also provide a home to refugee students, recent immigrants and students from a variety of ethnicities, creeds and cultures. Place-based learning and globally inspired learning partner in every respect.

### Q. How are you inspiring future teachers?

A. In two short years, we have brought to K-State a Huichol yarn painter from Nayarit, Mexico, a Oaxacan wood carver and painter from Oaxaca, Mexico, and a retablista from Peru. A genuine exchange of art, people, ideas, humanity and acceptance takes place with these guests. Another one of my art education goals is to enhance art education programs in the area, so we take visiting artists to area elementary, middle and high schools to work with K-12 students.

### Q. How are you inspiring area art teachers?

A. We developed "Aprendiendo del Arte-Learning from Art," a workshop specifically designed for art educators and other educators who want to grow professionally.

### Q. What is your goal for the art education program?

A. My goal for the K-State art education program is to be one of the most respected in the country. I think we are well on our way because our program is progressive, global in scope and functions from the viewpoint that art education should contribute to the overall academic experience of the student.

# Kansas Educational Leadership Institute

## Helping education leaders become effective leaders

A leadership organization housed in the College of Education was recently identified by the state's leading authority on education as playing a pivotal role in addressing two of the most challenging issues facing schools today: teacher supply and teacher retention.

Kansas Commissioner of Education Randy Watson's Blue Ribbon Task Force on Teacher Vacancies and Supply Report was released in August and named the Kansas Educational Leadership Institute, or KELI, instrumental in ensuring "that building and district leadership curricula are providing the school leaders of Kansas information and skills needed to create the school culture to retain outstanding teachers." Laurie Curtis, assistant professor of curriculum and instruction, is now the co-chair of the task force's standing committee.

Rick Doll, KELI executive director and former superintendent of Lawrence USD 497, said the need for leadership is extraordinary given the challenges facing Kansas schools. He pointed to the state's well-publicized financial concerns; a record turnover of Kansas superintendents — 20 percent left their positions in 2016; and teacher supply and retention issues.

"We're finding that young administrators are being thrust into higher-level leadership positions faster than ever," Doll said. "We desperately need strong leaders right now because of the issues involving the budget and standards, at-risk students and of course, teacher retention."

While the challenges are numerous, Doll is confident KELI is uniquely positioned to provide Kansas schools with the thing needed most: leadership. But how, exactly, does that translate into making schools better?

"KELI's research-based model helps administrators provide more effective leadership so teachers can be more effective, helping kids achieve at higher levels," Doll said. "It's all about student achievement. The research is pretty clear that the most important component of a child's education is the teacher. The second most important component is leadership. So if you can help teachers become more effective, that fits with leadership."

Doll said mentoring is not picking up the phone and calling a peer and asking what they would do in a given situation. Rather, the KELI model is based on coaching.

"Mentoring is all about training the mentors so they know how to coach, not just answer questions," Doll said. "It's about on-site visits to sit down with the new administrator. We evaluate the program annually from a mentor and a mentee standpoint. We gather feedback from the field, from school board members, and we have advisory groups. Then we have a field-based group advise us on what we're doing right and what we could be doing better."

KELI is proof that Kansas communities care about school leaders.

"A new superintendent or principal is an investment to a community," Doll said. "The research indicates that connecting them with a mentor really does ensure their success as a leader. Our product is kids. The consequence of us missing the mark is it impacts student learning. We can't afford to not get it right because having kids dropout is catastrophic to our society."

KELI was launched in 2011 when several statewide organizations banded together to form a comprehensive leadership program for the state's newest superintendents. It was so successful, the program expanded to new principals and, as of this year, includes special needs directors.

Education legend Mary Devin, longtime superintendent of Geary County 475, was the chief architect of the institute and served as KELI's first executive director. Dan Yunk, national award winner and former superintendent of Manhattan-Ogden USD 383, served as KELI's second executive director. Doll was named executive director in summer 2016.

For more information about KELI, please visit [coe.k-state.edu/annex/keli](http://coe.k-state.edu/annex/keli).





# New faculty

The college officially welcomed four new faculty since the last issue of Connections was published.



**J. Spencer Clark**

Department: Curriculum and Instruction

Degree: Doctor of Philosophy, Curriculum Studies, Indiana University

Research interests: Curriculum theory, teacher agency, teaching civic and historical agency, international civic education, and technology in civic education



**Jessica Lane**

Department: Special Education, Counseling and Student Affairs

Degree: Doctor of Philosophy, Curriculum Studies, Indiana University

Research interests: Kindergarten transition, elementary school counseling, counseling military children, academic motherhood, teaching/counseling children of poverty, collaboration between general and special education, common core, early childhood education



**Suzanne L. Porath**

Department: Curriculum and Instruction

Degree: Doctor of Philosophy, Curriculum and Instruction, University of Wisconsin, Madison

Research interests: Literacy, teacher learning and development, technology in professional learning, action research, teacher inquiry



**Rick Doll**

Department: Executive director, Kansas Education Leadership Institute

Degree: Doctor of Philosophy, Educational Administration, Kansas State University

Research interests: District leadership and mentorship of new school leaders

## College established Educators Rising program

Since the fall 2016, approximately 170 students in the College of Education have teamed up as part of a mentoring effort among five organizations collaborating to provide unprecedented support for future teachers.

Educators Rising is a national network, but the College of Education modified its structure to include a peer-mentorship model designed. The goal is to better prepare students for success during their time at K-State, and ultimately for success in their future classrooms. The students were paired with fellow student leaders in Education Ambassadors; Education Council; Kansas National Education Association — Student Program; Kappa Delta Pi International Honorary; and Phi Delta Kappa International.

Rylan Laudan, senior in elementary education and K-State Educators Rising president, said connecting with people is key to student success.

"I believe this is a perfect fit for a college that is already making so many strides to help its students make an impact," Laudan said. "I've always been passionate about relationship-building and mentoring others, so not only does Ed Rising play to what I am extremely enthusiastic about, it also provides tremendous benefits for both mentors and mentees in the College of Education."

Mac Benavides '13, the college's recruitment coordinator, explained Educators Rising developed or enriched programs that bookend the student experience at K-State.

"With Educators Rising, we have a mentorship program that pairs a student with a peer on campus and

connects them with national organizations that will serve as a support system throughout their tenure on campus," he said. "After graduation, the EdCats program will provide early-career teachers with professional guidance and support as they navigate through their first few years in the classroom. We think these initiatives will be especially attractive to students looking to be a valued member of a university throughout their academic career and beyond."



*Mac Benavides, right, pauses with a group of future teachers while attending a regional Educators Rising conference at Washburn University this spring.*



# College of Education Honor Roll of Philanthropy

## Lifetime Honor Roll Gifts

### Bluemont Visionaries

*\$100,000 and above*

Judith Cain\*  
Gib and Brenda Compton  
Gordon and Pat Crosby  
Lee and Barbara Harris  
Charles and Sandra Rankin  
Sue and Timothy Regan  
Cibyl and Jim Ronen  
Jim Schroeder  
Elvon\* and Lydia\* Skeen  
Mary Lynn and Warren Staley  
Marilyn and Bill Taylor  
Phyllis Wilbur  
Dorothy and Bob Willcoxson

### Bluemont Leaders

*\$50,000-\$99,999*

Paul Blackwood\*  
Ernest BrAun\*  
Lewis BrAun\*  
Nancy and Charley Cole  
Bob and Tracey DeBruyn  
Marilee and Rich Donaldson  
Mike and Kathy Holen  
John and Charlotte Morrow  
Steven Palmer  
Sylvia and Roy Robinson  
Bob Thompson and  
Jeanne Curtis-Thompson  
Connie and Donald Wertz  
Nancy and Tex Winter  
Dan and Cheryl Yunk

### Bluemont Patrons

*\$10,000 - \$49,999*

Mike and Dixie Aarstad  
Russ and Cari Alford  
Bill and Deb Anderson  
Kathy Borck  
Donna and Bill\* Bright  
Dwayne Broddle  
Kenneth and Maxine Burkhard  
Colene Henson Butler and Charles Butler  
Doris and Greg Carroll  
Randy and Rachel Collett  
Nancy and Roger Coulter  
Nancy and Charlie Craig  
Debbie and Mike Dawes  
Karen and Jim Day  
Ann Zimmerman and Dexter Eggers  
Yelton Faulkner\*  
Karol and Ben Finch  
Freeman French\*  
Katherine Geyer\*  
James and Rebecca Graham  
Karen and Jim Graves  
Bev and Morris Greenwood  
Garth and Lindsay Greimann  
Cynthia and Ken Habiger  
Richard Hampe  
Patricia and Steve Hanson  
Allan and Carolyn Harms  
Carolyn and Allan Harms  
Nancy Hause  
Michael and Marlys Haverty  
Betty and Lee Higbie  
Joleen Hill  
Ken and Judy Hughey

Jan and Jon Isch  
Ronald Jones  
Mike and Gloria Konold  
Marty Vanier and Bob Krause\*  
Gary and Carol Lazarus  
Cheryl and Richard Lewis  
Tim and Julie Lim  
David and Ruth Martin  
Mel and Don Matuszak  
Janice McIntosh  
Jo\* and Jim McKinnis  
Karen and Jim\* McMillen  
Eveanna Mosier  
Ed and Jeanne Mulcahy  
Rod and Beverly Nash  
Jean Oberhelman  
Jeanette and Dan Pearson  
Joe and Paula Rei  
Joy and John Richards  
Margaret Ruccolo  
Nancy Ryan  
Francis and Phyllis Sanders  
Mary Schindler\*  
Bruce and Peggy Schrott  
Phyllis and Donald Schultz  
Michael and Susan Scully  
Barry Segal  
Charles\* and Doris\* Setterquist  
Alice Show\*  
Bob and Marilyn Sjogren  
John and Renda Snyder  
Veryl\* and Rosemary\* Snyder  
Brad Stauffer and Judy Molde-Stauffer  
Michael Romaniszyn and Be Stoney  
Pat Sweeney  
Sharon and Alan Sylvester  
David and Diane Thompson  
Linda Thurston  
Douglas and Pat Tippin  
Keith and Diane Turner  
Janet and Dave Wavering  
Richard and Martha Wenger  
Mary Sue and Herb Whitney

### Trusts/Foundation/ Corporations

*\$10,000 and above*

Airgas Central Accounting Group  
Alice E Cain Trust  
AT&T Foundation  
Atwood & Palmer Inc  
Bartlett and Company  
Blueville Nursery Inc  
BNSF Railway Foundation  
Citgo Petroleum Corporation  
Compton Construction Services  
Cynthia Johnson Trust  
Doris Dewey Smith Trust  
Doris M Setterquist Trust  
Enid And Crosby Kemper Foundation  
Ernst & Young  
Focus Autism Inc  
Focus for Health Foundation Inc  
Grambling State University  
IBM International Foundation  
Ideal Learning Inc  
Kansas Bankers Association  
Kansas City Southern Industries Inc  
Kansas Council on Economic Education  
Kansas Farm Bureau Mutual Ins Co Inc  
Kenneth L Martin Trust  
MacSource

Margaret I Morris Trust  
National Academic Advising Association  
Phyllis Mayott Moore Estate  
R D & Joan Dale Hubbard Foundation  
Securities Industry Foundation for  
Economic Education  
Sprint Foundation  
Texas Instruments Foundation  
The Boeing Company  
The Dow Chemical Company  
The Dow Chemical Foundation  
The Greater Kansas City  
Community Foundation  
The Master Teacher  
Zimmerman Family Foundation Inc

### Bequests or Deferred Gifts

*\$10,000 and above*

Alan and Karen Bell  
Phyllis and Bill Binford  
Alice Cain\*  
LeAnn and Stan Clark  
Nancy and Charley Cole  
Gib and Brenda Compton  
Norman Cooper  
Nancy and Roger Coulter  
Marilee and Rich Donaldson  
Dave and Kristen Dreiling  
Donna and Larry Erpelding  
Karol and Ben Finch  
Cathy and Mitchell Foote  
Sherry and Curt Frasier  
Ed and Deanne Gorsky  
Christi and Joe Gottschalk  
Bev and Morris Greenwood  
Carolyn and Gary Haden  
Lee and Barbara Harris  
Mary and Dan Hebert  
Jan and Dick Hedges  
Betty and Lee Higbie  
Mike and Kathy Holen  
Robert and Marcella Irby  
Carolyn Kaberline  
Mike and Gloria Konold  
Cheryl and Richard Lewis  
Kay\* and Ken\* Martin  
Alfred\* and LaDonna Mayer  
Karen McMillen  
Linda and Timothy Mitchell  
Eveanna Mosier  
Galen Norby  
Karen and Don Norton  
Nancy and Thomas Nurnberg  
Carl Nuzman  
Joycelyn and Thomas Parish  
KelLee Parr  
Donna and George\* Pierson  
Sharon Pooler  
Dennis and Nancy Powell  
George and Beverly Rutkoskie  
Cheryl Hewitt and David Schauner  
Michael and Susan Scully  
David and Eileen Simmons  
John and Renda Snyder  
Brad Stauffer and Judy Molde-Stauffer  
Marilyn and Bill Taylor  
Bob Thompson and  
Jeanne Curtis-Thompson  
Judy and Terry Turner  
Richard and Martha Wenger  
Nancy and Tex Winter

## Honor Roll of Giving

### Fiscal Year 2016

### Dean's Club Ambassadors

*\$10,000 and above*

Marilee and Rich Donaldson  
Lee and Barbara Harris  
Betty and Lee Higbie  
Mike and Kathy Holen  
Sue and Timothy Regan  
Cibyl and Jim Ronen  
Margaret Ruccolo

### Dean's Club Benefactors

*\$1,000-\$9,999*

Mike and Dixie Aarstad  
Donna Bright  
Colene Henson Butler and Charles Butler  
Gib and Brenda Compton  
Nancy and Roger Coulter  
Nancy and Charlie Craig  
Gordon and Pat Crosby  
Debbie and Mike Dawes  
Karen and Jim Day  
Terry and Ann Ecklund  
Ann Zimmerman and Dexter Eggers  
Karol and Ben Finch  
Linda and David Fraser  
Cynthia and Ken Habiger  
Allan and Carolyn Harms  
Carolyn and Allan Harms  
Jan and Dick Hedges  
Ken and Judy Hughey  
Mike and Gloria Konold  
Gary and Carol Lazarus  
Cheryl and Richard Lewis  
Linda and James Maddox  
David and Ruth Martin  
Mel and Don Matuszak  
Karen and Jim\* McMillen  
Jim Adams and Debbie Mercer  
Eveanna Mosier  
Rod and Beverly Nash  
Joyce and Ken Nesmith  
Judy and Clancy Norris  
Karen and Don Norton  
Charlie Nutt  
Robert and Wendy Perkins  
William Powell  
Charles and Sandra Rankin  
Joy and John Richards  
Alison and Mark Riegel  
Sylvia and Roy Robinson  
Nancy Ryan  
Francis and Phyllis Sanders  
Michael and Susan Scully  
David and Eileen Simmons  
Bob and Marilyn Sjogren  
Brad Stauffer and Judy Molde-Stauffer  
Michael Romaniszyn and Be Stoney  
Marilyn and Bill Taylor  
Bob Thompson and Jeanne Curtis-Thompson  
Janet and Dave Wavering  
Connie and Donald Wertz  
Janita and Ben Witty  
Ruth Wolfe  
Larry and Betty Wright

### Dean's Club Mentors

*\$500-\$999*

Shelley and Joseph Aistrup



Kathy Borck  
David and Heidi Butler  
Donald and Sally Chew  
Nancy and Charley Cole  
Elinor Draine  
Cindi and Duane Dunn  
Jan and Rob Eichman  
Sondra and Skeeter Goar  
Ed and Deanne Gorsky  
Patricia and Charlie Grimwood  
Marcia and Allen Hahn  
Jim and Mary Kay Harders  
Nancy Hause  
Linda and Roy Henry  
Stephanie and Eugene Herl  
Susan and Charles Herman  
Becky and John Howard  
Steven and Annette Huff  
Marilyn and Charles Kaff  
Richard and Ardie Kleindienst  
Kelly and Pat Landes  
Jeremy and Emily Lehnung  
Kathy and Max Martin  
Rebecca and Tim Miller  
Mary and Mr Moore Moore  
Sharon and Kyle Murdock  
Deborah Perbeck  
Marcia and Palmer Price  
Charles Ricker  
Bob and Marlene Riedel  
Edwin Schmeidler  
Arnita and Ronald Schultz  
Phyllis and Donald Schultz  
Luke Sobba  
Maureen and Scott Stewart  
Sandra Strawn  
Sharon and Alan Sylvester  
Sue Peterson and Charlie Thomas  
Linda Thurston  
Mary Sue and Herb Whitney  
Phyllis Wilbur  
Don and Jan Wissman  
Dan and Cheryl Yunk  
Xueqin and Yudong Zhang

## Dean's Club Partners

*\$250-\$499*

Peggy and Del Acker  
Leah and Randel Atchley  
Patti and Gerald Benda  
Roberta and Dennis Bennett  
Sally and Richard Berger  
Larry and Alice Bowser  
Pat and Luann Boyer  
Tad and Heather Brewer  
Tina and Dana Brewer  
Nancy and Ronald Bridges  
Donna Brodd  
Denise and Jim Brownlee  
Kent and Martha Buess  
Dirk Rosendahl and Caren Cahill  
Ann and Tracy Caine  
Patty and Jim Carlson  
Doris and Greg Carroll  
Sherry and Dale Conrad  
Marilyn and Gerald Davis  
Diane and Severin DeBacker  
John and Carole Denning  
Rodney and Judy Dietz  
Dale Dow  
Allison and Matt Ebert  
Linda and Ray Ely  
Geary and Linda Engemann  
Ann and Howard Erickson  
Larry and Genera Farmer  
Joyce and Martin Fee  
Elizabeth and N D Garnett  
Bonnie Gibbons  
Karmen and Jeremy Girard  
Abby and David Gourley  
Doug and Bette Grauer  
Patricia and Steve Hanson  
Freddie and Verna Hartfield

Nancy Hendricks  
Trudie and Bill Hoffman  
Joanie and Loney Hutchins  
Stephen and Linda James  
Katie and Barry Jensen  
Ramona Johnston  
Jane and Lanny Jones  
Phillip and Kathryn Kemmerly  
Clarence and Joanne Kirby  
Milton and Eva Kleinpeter  
Marty Kramer  
Jack and Marian Larson  
Linda and Dave Latham  
Von and Jerre Lauer  
John and Connie Lehman  
Don and Corrine Leonard  
Nancy and Donald Livingston  
Royce Ann Collins and James Martin  
Andrea and Mike McWright  
Barbara and William Mengeling  
Marilynn Menuuey  
Ted and Florence Metcalf  
Tara and Rick Myers  
Leslie Need  
Debra O'Brien  
Owen O'Heir  
Ligia Paquette  
Joyce and Duane Plyter  
Dennis and Nancy Powell  
Virginia and Lawrence Propp  
Nicki and Daymian Reed  
Elmer Richers  
Doris and Bill Ridge  
Betty Robison  
Susan and Dennis Rogers  
Janice and Ted Smith  
Jim Swint  
Suzanne Walker  
Cynthia and Jeffrey Wenzel  
Matt and Christy White  
Grant Wilhite  
James and Jean Wohler  
Jane and Joe Works

## Dean's Club Friends

*\$100-\$249*

EJ and Caleb Adams  
Kay and Franklin Ahrens  
Rob Alderson  
Russ and Cari Alford  
Angela and David Allen  
Julie and Michael Allen  
Merle and Vicky Allen  
Norene Allen  
Mary Anne and Karmon Almquist  
Jacque Alstatt  
Deanna Amstein  
Edna and Jerry Anderson  
Jane and James Anderson  
Joan and Bob Anderson  
Kathy and Donald Anstaett  
Jim and Cheryl Armendariz  
Mary Sue Wallerius-Ash and David Ash  
Sara and Robert Aufdemberge  
Brent and Dee Austin  
Natalie Ax  
Jane and Douglas Ayre  
Mike and Lindsey Aytes  
Michele and Dave Bach  
Ellen and Lauren Baeten  
Rachelle and William Bahr  
Jerene Bain  
Barbara and Ted Baker  
Mark and Bernice Barber  
Anthony and Mahilea Barry  
Brooks and Tonya Barta  
Don and Lydia Barth  
Sandy and Bob Bartkoski  
Laurie and Kirk Baughan  
Edwin and Velda Becker  
David and Donni Benson  
Deloris and Steve Berland  
Alice and Terry Bertels  
Debbie and Joe Beuerlein  
Michelle and Joseph Biggs  
Claudia and John Bird  
John and Yolanda Black  
Misti and Mitch Black  
Shirley and John Blankenship  
Christopher and Jeanne Boetig  
Margaret and Don Bolick  
David and Mary Ann Bond  
Ruth and Michael Booth  
Rochelle Boster  
Ann and Larry Boyce  
Janae Brady  
Kenton and C Brandon  
Wanita Bratton  
Ellie and Ben Brent  
Carla Broce  
Ross Broockerd  
Ellen and Ken Brown  
Scott and Jennifer Brown  
Patricia Bruce  
Curt and Christie Brungardt  
Barbara and Raymond Buck  
Rebecca and Paul Burdick  
Dustin and Meaghan Burton  
Kathryn Busch  
Michael and Ann Byington  
Kathy Byrd  
Karen and Patrick Call  
Cindy Eichman-Call and John Call  
Judith and James Callen  
Rich and Alisa Campbell  
Terri and Tim Cantrell  
Gerelyn Carlin  
Dana and Barbara Carpenter  
Andre Cavitt  
Curtis and Susan Cearley  
Barbara and John Chadwell  
Margie Staggs and Bruce Champlin  
Linda and Mike Chapin  
Judith and William Chastain  
Jake Liu and Pearl Chen  
Cindy Cherry  
Kenneth and Sandra Church  
Jason and Heather Cline  
Gerry Coffman  
Penny Coggins  
Linda and James Collins  
Crystal Collinsworth  
Connie and Greg Compton  
Julie and Chris Conard  
Kathryn Conner  
Becky and Mark Conner  
Marcia Cook  
Norman Cooper  
Patricia and Pat Corrigan  
Lois and Joseph Cox  
Valerie Cox  
Madonna Letourneau and Rocky Craig  
Lora Carmichael and Randal Crmichael  
Loretta and David Cudney  
Daniel Cunningham  
Mark and Rebecca Dalton  
Richard and Judy Davis  
Bob and Tracey DeBruyn  
Linda Kruckenber-Deckert and Andy Deckert  
Bonnie Deiter  
Carolyn and Milton Demory  
Keri and Thomas DeSutter  
Jean Dettmer  
Peggy and Arlen Dettmer  
Helen and Loren Detwiler  
Dennis Devenney  
Mary Devin  
Jack and Bonnie Diekman  
Susan and Ed Dillinger  
Marilyn and Jack Dillon  
Bob and Eileen Docherty  
Irene and Robert Dodder  
Mary Dolan  
Vic and Cathy Doperalski  
Sara and Jeffrey Dougherty  
Cynthia and Alan Dowdy

Denise and Tom Dragastin  
Lou Ann and Tom Dunn  
Becky and James Dunster  
Barbara and David Dvergsten  
Deborah and Robert Eaverson  
Janet and Morris Edwards  
Marie-Anne and Donald Eickholt  
Heather and Randy Eilert  
Marilyn Weyer-Elder and Dick Elder  
Elizabeth and Terence Engelken  
Naomi England  
Willie and Barbara Epps  
Nancy and Jay Evans  
Andrea and James Ewert  
Mary and Bob Exline  
Harold and Venice Facklam  
Jeffrey Fett  
Kendra and Josiah Feuerbacher  
Kevin and Christine Finson  
Theresa Raven and Daniel Fitch  
Bobbie Flaherty  
Sandie Floyd  
Michelle and Dan Foster  
Curt and Susan Fowler  
Henrietta Fox  
Harvey and Joanne Foyle  
Linda and Ron Fraass  
Dustin and Kaylee Francis  
Gerald and Linda Franklin  
Robert and Robin Frye  
Linda and Rich Gallagher  
Michael and Beth Gardner  
Nancy and Earl Gatz  
Lou Ann and Randy Gebhards  
Sarah and Tony Geiger  
Robert and Terrie Gettino  
Page and Bryan Ginns  
Bernard and Marcia Girard  
Penny and John Gisselbeck  
Linda and James Goddard  
Rhonda and Tim Green  
Rebecca and Mark Gregory  
Carol and Tom Grennan  
Kelli and Ryan Grieves  
David and Jamie Griffin  
Doug Griffith  
Donald and Ana Grimm  
Carolyn and Allen Guernsey  
Eileen Epps-Hamilton and Ronald Hamilton  
Karen and Gregory Hammer  
Joseph and Jane Handlos  
Asel and Joanne Harder  
Barbara Harlan  
William and Beverly Harmon  
Connie Harris  
Lorraine and Ron Harris  
Bridget and James Hasty  
Ronald Hatfield  
Connie Haughey  
Kelly and Hal Havens  
Chuck and Barbara Havlicek  
Jacqueline and Robert Hays  
Cynthia Heath  
Linda and Ted Heath  
Roger and Barbara Heiman  
Nancy and James Hein  
Amy and David Hendricks  
Lori and Corey Henry  
Meg and Daniel Hewes  
Doug and Mary Higgins  
Callie and Jim Hildebrand  
Molly and Randall Hildebrand  
Ruth and Dwight Hill  
Carolyn and David Hinderliter  
Johnette and Robert Hodgins  
Julie and Jamie Hoff  
Jill and William Holston  
Karen and Gene M Holthaus  
Danielle and Brian Holzwarth  
Gary and Melissa Hopkins  
Pamela and Mike Hopkins  
Roy and Roberta Hopkins

Larry and Roseanna Van Horn  
 Bob and Janeen Horton  
 Beverly and Eddie Howard  
 Ronald and Jeannie Hughes  
 Marcie and Thomas Hunter  
 Patricia and James Hunter  
 Norman and Jeanette Hupe  
 Mary Jane Hurley  
 Katha Hurt  
 Rhonda and Fred Huser  
 Vina and Thomas Hyde  
 Sherry and Jeffrey Ingles  
 Jan and Jon Isch  
 Janice and Darold Jackson  
 Mary and Charles Jackson  
 Heather and David Jacus  
 David and Michelle Jennings  
 Gene and Darlene Jeppesen  
 Roy and Judy Johansen  
 Claudia and Jim Johnson  
 Kyle Johnson  
 Phyllis Johnson  
 Roy and Linda Johnson  
 Ellen and Ronald Jones  
 Genevieve and David Jones  
 Lisa and Jackie Jones  
 Carol Ogden-Jones  
 Karl and Rita Kastens  
 Marilyn and Terry Kastens  
 Brenda and Harold Keller  
 Elaine Keller  
 Rachel and Daniel Kelly  
 Bill and Faye Kennedy  
 Barbara and Larry Kern  
 Bob and Shellaine Kiblinger  
 Margaret and Samuel Kilpatrick  
 Judy and Tom Kimball  
 Kelly and Matthew Kinnan  
 Mary and Sam Knecht  
 Hal and Terri Knight  
 Erin and Bret Knighton  
 Leroy and Linda Koehler  
 Marty and Richard Kraemer  
 Krista and Kyle Kramer  
 Laura and Edward Krieger  
 Craig Kuehnert  
 Dianna and Chuck Kuntz  
 Christy and Alan Ladd  
 Mary Ann Lagemann  
 Susan and David Lalman  
 Sheree Lambert  
 Annette Warder and John Lambert  
 Julia and David Lancaster  
 Lori Lang  
 Marty and Chic Lang  
 George Lange  
 Jay and Stacy Lardizabal  
 Lori and George LaVezzi  
 Laura and Mac Learned  
 Viola and Jim Lee  
 Patricia and Dale Leikam  
 Joshua Lesser  
 John Letourneau  
 Bonnie and Michael Lewis  
 Lynne and Randi L'Hommiedieu  
 Nancy and Jeff Lichtenfels  
 Mary and Lawrence Lonsinger  
 Barbara and Jim Lorson  
 Maria and Aaron Luthi  
 Terri and Tadeusz Maciuba  
 Scott and Julie Maddry  
 Robert\* and Meredith Main  
 Paul and Teddi Maneth  
 Allan and Christine Marquardt  
 Jane and Tom Marshall  
 Janice Martens  
 Henry and Judith Martin  
 Mary and Robert Martin  
 Verl Martin  
 Barbara and Roger Maughmer  
 Ruth Davison-Maxwell  
 Kim and Jamie McAtee  
 Cindy and Bo McClellan

Janet and Thomas McCoy  
 Harry and Charlotte McDonald  
 JoAnn McDowell  
 Kim and Gary McGuire  
 Shawn and Tonya McNay  
 Suzanne and Patrick McKaig  
 Richard and Marge McKittrick  
 Larry and Charlene McLean  
 Kevin and Candy McNorton  
 Toni and Jeff McReynolds  
 Catherine and James Meeker  
 Connie and Gary Mehl  
 Prairie and Shane Meis  
 Patricia Merrill  
 Ruth and Jack Messer  
 Sharon and Galen Meyer  
 Kelly and Troy Meyers  
 Richard Michaelis  
 Jan and Gerard Middendorf  
 Julie and Dennis Mildenger  
 Beth Miller  
 Doris Miller  
 Everett and Marlene Miller  
 Monte and Lynda Miller  
 Teresa and Randy Miller  
 Verna and Daniel Miller  
 Pat and Leon Mills  
 Elizabeth and Meade Mitchell  
 Virginia and John Mixer  
 Carol and Jeffery Modean  
 Virginia Moon  
 Carol and Kenneth Moore  
 Laryssa and Douglas Morehead  
 Wendy and Dusty Moshier  
 Karen and Leon Mosteller  
 Rita Muckenthaler  
 Sharlene and Karl Mueldener  
 Doug and Jamie Mulanax  
 Janice and James Mulvany  
 Diane Murphy  
 Marilyn and Ernest Nangle  
 Jennifer Nash  
 Jolene and Joseph Nesselhuf  
 Kendra and Daran Neuschafer  
 Brad and Barb Newitt  
 Sharilyn and Jeff Newton  
 Celia and Larry Nicholson  
 Diane and Brad Nickelson  
 Thomas and Helen Norris  
 Robert and Jonice Oblander  
 Kristi and Justin Ochs  
 Sandy and Leslie Ogg  
 Shawna and Mark O'Halloran  
 Mary and George Ohlund  
 Joyce and Larry Oldham  
 Sharon and Joseph Olson  
 Molly and Patrick O'Sullivan  
 Dulce Maria and Roland Ouellette  
 Janet Brown and Felton Page  
 Pete and Nancy Pallesen  
 Jake Pannbacker  
 Barbara Park  
 Leroy and Angela Parr  
 Nancy and Randy Parsons  
 Russell Pauls  
 Jeanette and Dan Pearson  
 Theresa and Buck Peddicord  
 Kristine and Bob Peel  
 Liz and Ken Peirce  
 Erica and Darin Penner  
 Judith Siminoe and Michael Penrod  
 Gerald and Verjanis Peoples  
 Jenny Pereira  
 Jack Perna  
 Curt Peter  
 Traciann and Keith Petite  
 Jill and Kenneth R Pittman  
 Sharan and David Pittser  
 Sharon Pooler  
 Janice and Jerry Pope  
 Jean and Charles Popelka  
 Ronald Preston  
 Kirsten and Mack Price

Ronald and Suzann Propp  
 Sharon and Thomas Punzo  
 Leonard and Sharon Purvis  
 Bruce and Diane Quantic  
 Cheryl Raborn  
 Leslie and David Rader  
 Kermit Rainman  
 Craig and Carol Ratzlaff  
 Kathy Raymond  
 Kathleen and Lindley Reimer  
 Stacy and Gary Rempe  
 Laura and Mike Renfro  
 Pat and John Reppert  
 Lori and John Riedel  
 Joyce Rittenhouse  
 Nick and Lori Rodriguez  
 David and Elisabeth Rogers  
 Shari and Mark Rooks  
 Ronald and Glenda Y Dewberry Rooney  
 Jennifer and Neil Rose  
 Mary and Jim Russell  
 Sandra and Edwin Rutkowski  
 Shari and Paul Ryding  
 Candace and Scott Sage  
 Patti Berlin and Chuck Samples  
 Margo and Steve Sayre  
 Cheryl Hewitt and David Schauner  
 Beth and Mark Scheve  
 Carrie Schmidt  
 Karen Schmidt  
 Kristin and Eric Schoeff  
 Patricia and Terry Schoenthaler  
 Ryan and Kaycee Schoonover  
 Andra and Aaron Schroeder  
 Joyce Schultz  
 Winston and Jacqueline Scott  
 Seth and Cassie Scripter  
 Martha and Dick Seaton  
 Debra and Michael Seibert  
 Jim and Dona Selby  
 Robert and Tina Seymour  
 Patrick Shaughnessy  
 Kay Shaw  
 Deb and Steven Shepek  
 Lucas and Rachel Shivers  
 Janice and Ken Shobe  
 Brad and Tami Shores  
 Carianne and Troy Short  
 Janice and James Sim  
 Roy and Earline Simms  
 Christina and Mark Simpson  
 Lynn and James Skaggs  
 Marilyn and Daniel Sloan  
 Emily and Nicholas Smith  
 Lamar Smith  
 Gay Southwell  
 Ron Speight  
 Margie Spiers  
 Joan Spiker  
 Franklin and Jamie Spikes  
 Sarah and Dustin Stafford  
 Marsha and Paul Stallsworth  
 Carolyn and Alan States  
 Tammy and Don Steeples  
 Howard and Evelyn Stenzel  
 Joanne and Kevin Stokes  
 Barbara and Terry Stout  
 Cheryl and Matt Stout  
 Somer and Mark Stuhlsatz  
 Jennifer and Bill Sturges  
 Donnetta and Mark Suchon  
 Stefni and Kirk Summers  
 Ann and John Susko  
 Roger Suttner  
 Deborah and William Swan  
 Dorothy Swearingen  
 Ronda and Donald Sweat  
 Pat Sweeney  
 Carol and Donna Swenson  
 James and Kathy Teagarden  
 James and Lora Tenpenny  
 Patricia Thompson  
 Dennis and Gwyneth Throne

Charla and Don Tilton  
 Linda Timmons  
 Marsha and James Tinkum  
 Audrey Todd  
 Linda Tomasch  
 Betsy and Aaron Towns  
 Deanna Tressin  
 Ken and Mary Anne Trickle  
 Emily and Jordan Trivette  
 Thanh and Hai Truong  
 Kristin and Ryan Turner  
 Bruce Turner  
 Charles and Laurie Vance  
 Shirley and Vernon Vandahl  
 Scott and Carielyn VanDeCreek  
 Dorothy Vawter  
 Ron and Tammy Vinduska  
 Kristy and Brian Virginia  
 Randol and Bonnie Walker  
 Carolyn and Ray Waller  
 Carolyn and Roger Warren  
 Donna and Lonny Wartman  
 James and Beth Watts  
 Shari and Craig Weeks  
 Susie and Stan Weir  
 Richard and Martha Wenger  
 Brian Wetta  
 Kristen and Bob White  
 Ashley and Tyler Whitmore  
 Robin and Jason Whitten  
 Butch and Janice Whicman  
 Linda and Ron Wilcox  
 Ann Wiles  
 Lisa and Gary Williams  
 Robert and Diana Williams  
 Jean and Bill Willson  
 Cory Wilson  
 Marsha and James Wilson  
 Mary and Leslie Wingfield  
 Brendan Winkler  
 Barry and Judy Witten  
 Scott Murphy and Marieke Wolfe  
 Neva and James Wood  
 Lynda and Monty Woodard  
 Marilyn and Robert Wright  
 Sally Yahnke  
 Brian and Tara Zachgo  
 Rolland and Sharon Zier

## Trusts/Foundations/ Corporations

Allan H Marquardt PH.D.  
 Bank of America Charitable Gift Fund  
 Bunge North America Foundation  
 Cisco Systems Inc  
 Citgo Petroleum Corporation  
 Compton Construction Services  
 Daran Neuschafer Agency Inc  
 Debacker Consulting LLC  
 Dillinger Ranch  
 Focus for Health Foundation Inc  
 Hallmark Corporate Foundation  
 Hallmark Global Services LLC  
 Higgins Educational Services LLC  
 IBM International Foundation  
 JB Associates  
 Margaret I Morris Trust  
 National Academic Advising Association  
 Nationwide Mutual Insurance Company  
 ONEOK Foundation Inc  
 Phillips 66 Company  
 PNC Bank Foundation  
 Reed Seed Sales  
 Shell Oil Company Foundation  
 Snodgrass Partners Inc  
 Sprint Foundation  
 Texas Instruments Foundation  
 The Boeing Company  
 Truist  
 Wells Fargo Foundation  
 Westar Energy  
 Zimmerman Family Foundation Inc

\* Deceased



